



SA | LK

SALZBURGER LANDESKLINIKEN

THE COMPANY YESTERDAY - TODAY - TOMORROW



UNIVERSITY HOSPITAL

UNIKLINIKUM
SALZBURG



LANDESKLINIK
ST.VEIT

TEACHING HOSPITAL OF PMU



LANDESKLINIK
TAMSWEG

TEACHING HOSPITAL OF PMU,
MED UNI VIENNA & MED UNI GRAZ

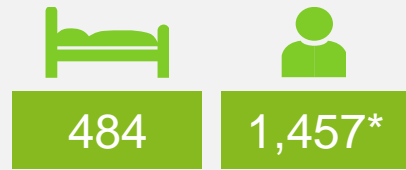


LANDESKLINIK
HALLEIN

TEACHING HOSPITAL OF PMU,
MED UNI VIENNA

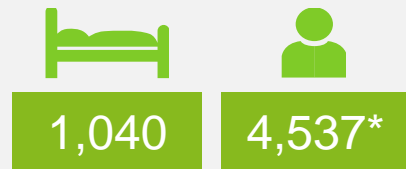
- University Medicine Salzburg
- University Hospital Salzburg
 - Campus Salzburg General Hospital
 - Campus Christian Doppler Medical Center
 - Paracelsus Medical University
- State Hospitals St. Veit, Tamsweg and Hallein
- Figures, Data, Facts
- Trendsetting construction measures
- Medical beacons
- Nursing service
- Our strengths

SALZBURG STATE HOSPITALS LOCATIONS

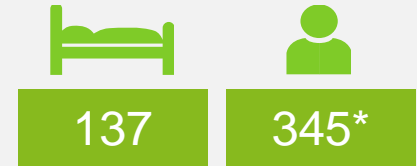


University Hospital Salzburg
Christian-Doppler-Medical Center

University Hospital Salzburg
Salzburg General Hospital



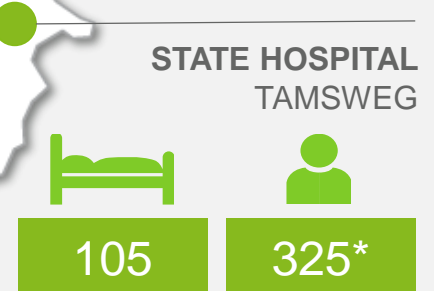
PARACELSUS MEDICAL UNIVERSITY



STATE HOSPITAL HALLEIN



STATE HOSPITAL ST.VEIT



STATE HOSPITAL TAMSWEG

* Heads 2022, bed status according to the "Regionaler Strukturplan Gesundheit Salzburg 2025" (Salzburg regional structure plan for health 2025), current version.

OBERNDORF Hospital, 111 beds

University Hospital Salzburg
Christian-Doppler-Medical Center, 484 beds

University Hospital Salzburg
Salzburg General Hospital, 1,040 beds

ST. VEIT STATE HOSPITAL, 95 beds

TAUERN Hospital, 326 beds

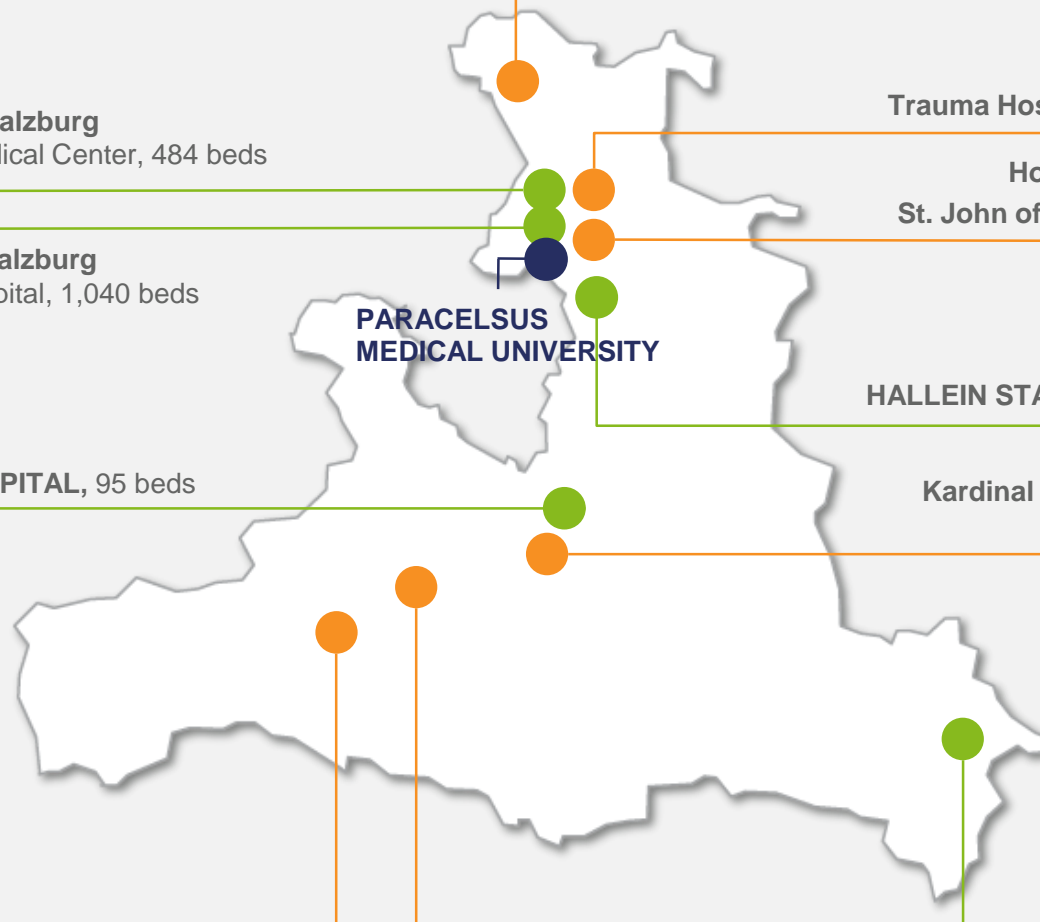
Trauma Hospital Salzburg, 138 beds

**Hospital of the Brothers of
St. John of God Salzburg, 222 beds**

HALLEIN STATE HOSPITAL, 137 beds

**Kardinal Schwarzenberg Hospital
Schwarzach, 497 beds**

**TAMSWEG STATE HOSPITAL,
105 beds**



Bed status according to the "Regionaler Strukturplan Gesundheit Salzburg 2025" (Salzburg regional structure plan for health 2025), in current version.



University Hospital Salzburg
CHRISTIAN DOPPLER MEDICAL CENTER

PARACELTUS MEDICAL UNIVERSITY

University Hospital Salzburg
SALZBURG GENERAL HOSPITAL

Trauma Hospital
Salzburg AUVA

Hospital of the Brothers of
St. John of God Salzburg



UNIKLINIKUM SALZBURG
UNIVERSITY HOSPITAL

SALZBURG GENERAL HOSPITAL



CHRISTIAN DOPPLER MEDICAL CENTER
UNIVERSITY HOSPITAL




Founded in 1695

Central hospital, acute care


All somatic specialities and trauma surgery except neurology, neurosurgery, psychiatry, childrens psychiatry, geriatrics, neuroradiology

1,040 beds*
4,537 employees
50,691 inpatient admissions
861,834 outpatient rates


Founded in 1898

Neurology
Neurosurgery
Psychiatry
Childrens psychiatry
Geriatrics
Neuroradiology
Clinical psychology

484 beds*
1,457 employees
9,975 inpatient admissions
162,539 outpatient rates



LANDESKLINIK ST. VEIT
TEACHING HOSPITAL OF PMU




Founded in 1913


State hospital with focus on:

Internal medicine
Innovative geriatric medicine
Psychiatry

95 beds*
222 employees
2,549 inpatient admissions
34,354 outpatient rates



LANDESKLINIK TAMSWEG
TEACHING HOSPITAL OF PMU, MED UNI VIENNA & MED UNI GRAZ




Founded in 1908


Primary care
Lungau

General surgery
Anaesthesia
Gynaecology and obstetrics
Internal medicine, orthopedics and traumatology
General renovation until 2019

105 beds*
325 employees
4,575 inpatient admissions
76,526 outpatient rates



LANDESKLINIK HALLEIN
TEACHING HOSPITAL OF PMU, MED UNI VIENNA



Founded in 1907

Primary care
Tennengau

Surgery, anaesthesia, Gynaecology and obstetrics, Internal medicine
Special emphasis on Orthopaedics & Traumatology
Radiology

137 beds*
345 employees
5,822 inpatient admissions
45,908 outpatient rates

* Bed status according to the "Regionaler Strukturplan Gesundheit Salzburg 2025" (Salzburg regional structure plan for health 2025), in current version.

Figures 2022

WE ARE THE FAMILY OF SALZBURG STATE HOSPITALS

- Largest healthcare provider and employer in Salzburg
- University medical care, teaching and research
- On-site medical care with access to the University Hospital Salzburg
- Transregional trauma centre
- Largest educational institution for medicine, nursing and health professionals
- Centre of preventive health care
- Shareholder of neurological, psychiatric, pediatric and oncological rehabilitation centres; ambulatory rehab centre



EVERYTHING
FOR YOUR
HEALTH



SALZBURG GENERAL HOSPITAL
CHRISTIAN DOPPLER MEDICAL CENTER



Supervisory Board

Management

- Areas of business management
- Management areas

STATE HOSPITAL ST. VEIT

STATE HOSPITAL TAMSWEG

STATE HOSPITAL HALLEIN

University Institute for preventive and rehabilitative sports medicine

reKiZ Children's neurological rehabilitation centre

Cooperation and participation

Neurological Rehabilitation NeuroCare

Gunther Ladurner Care Centre

Sonnberg Rehabilitation St. Veit

Oncological Rehabilitation St. Veit

Children's rehab Leuwaldhof St. Veit

Rehabilitation Center Salzburg

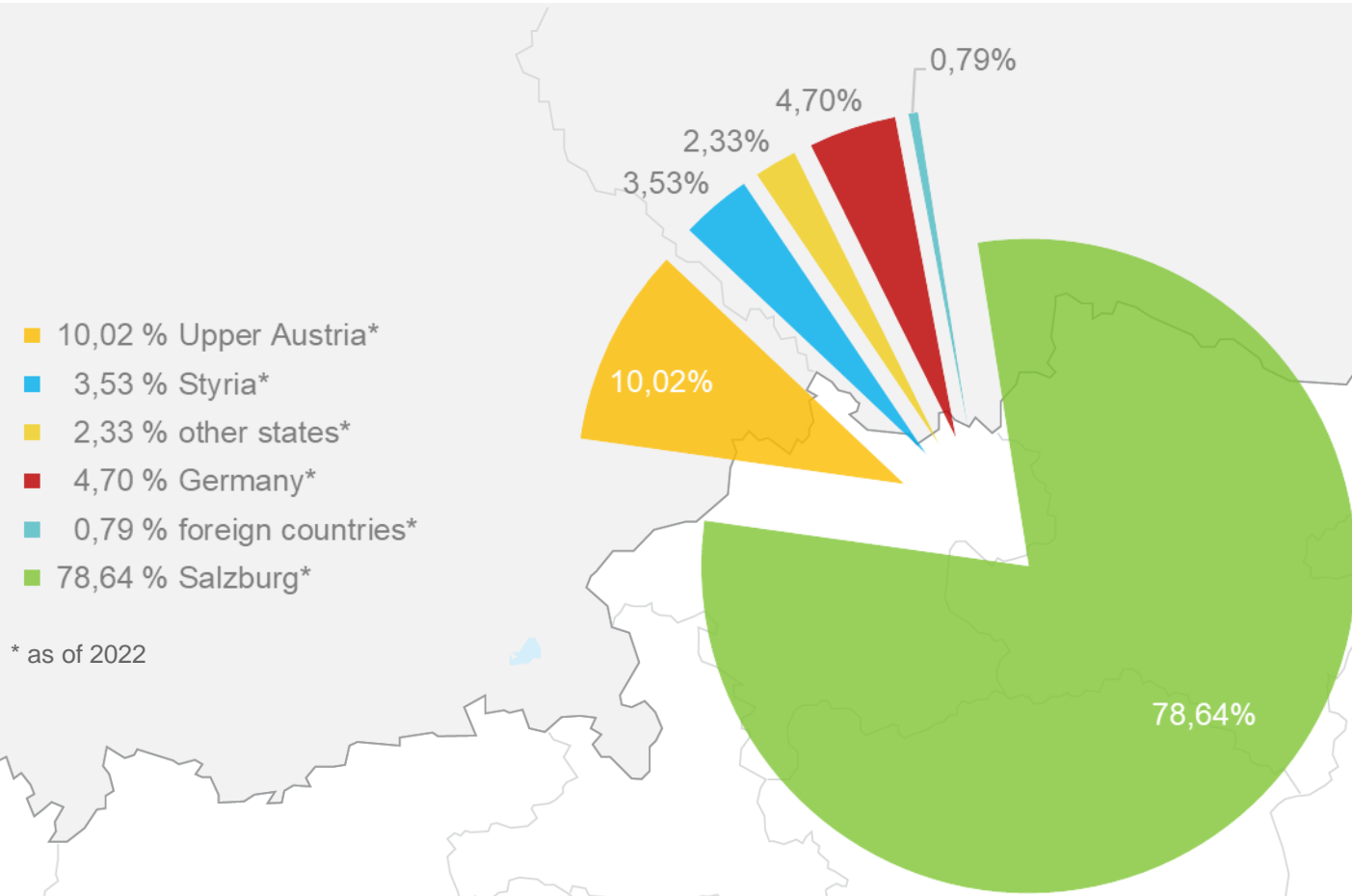
CRCS Clinical Research Center



Prof. Dr. Wolfgang Sperl, MD, PhD
President PMU

Dr. Thomas Gamsjäger, MSc
Dr. Silvia Lechner, EMBA HSG
CEO SALK

ORIGIN OF INPATIENTS



* as of 2022



PARACELSUS
MEDICAL
UNIVERSITY



UNIVERSITY HOSPITAL
UNIKLINIKUM
SALZBURG

UNIVERSITY MEDICINE SALZBURG

UNIVERSITY HOSPITAL SALZBURG



UNIVERSITY HOSPITAL SALZBURG
CAMPUS SALZBURG GENERAL HOSPITAL

Overview Salzburg General Hospital

Collegiate leadership

Medical Director:

Univ. Prof. Dr. Christian Pirich (interim.)

Commercial Director:

Dipl. Engineer Dr. Klaus Offner

Director of Nursing:

Franziska Moser, BA MA

Founded: 1695

Beds: 1,040*

Employees (heads): 4,537

Areas of care:

University hospital, acute care, all specialities except neurology, neurosurgery, psychiatry, childrens psychiatry, geriatrics, neuroradiology. rehabilitation centre Salzburg

	Per day	Per year
Outpatient rates	2,361	861,834
Inpatient admissions	139	50,691
Fully inpatients	119	43,484
Day clinic – surgical	17	6,331
Day clinic – chemotherapy**	1	240
Other	2	636
Births	7	2,550
Surgical procedures	77	28,080
Number of specialist clinics or institutes: 25		

* Bed status according to the "Regionaler Strukturplan Gesundheit Salzburg 2025" (Salzburg regional structure plan for health 2025), current version.

**Outpatient cases since 2019

History of the Salzburg General Hospital

- **1699** – Foundation of St. John Hospital by Prince Archbishop Johann Ernst Graf Thun (deed of foundation)
- **1692** – Construction under Johann Bernhard Fischer von Erlach
- **1695** – Opening building wing for men
- **1796** – Separation into a medical and surgical department
- **1899** – Opening of the Children's Hospital by Archduchess Marie Valerie of Austria
- **2003** – Paracelsus Medical University begins academic teaching, SALK partner and training centre for clinical practices and research



HIGHLIGHTS OF THE UNIVERSITY MEDICINE SALZBURG

EB House: Expertise centre for rare skin diseases

- University Clinic Epidermolysis Bullosa (EB) Centre for Dermatology and Allergology: Help for "**Butterfly Children**"
- **EB clinical outpatient department:** wound management, pain therapy, nutritional counselling, pre and post care
- **EB research:** aim of alleviation and cure, focus on operative genetic and cell therapy
- **EB Academy:** specific training, international patients and networking
- **Health care provider of the European Reference Network** for rare and complex skin disorders



HIGHLIGHTS OF THE UNIVERSITY MEDICINE SALZBURG

Oncological reference centre

- Since 2004, Salzburg has had the lowest and the **most continuously decreasing rate of cancer mortality** of all federal states (Statistic Austria)
- The recipe for success is an **intensive interdisciplinary collaboration** at the highest technical level
- **Internal medicine, surgery and radio-oncology** supported by pathology, diagnostic radiology, nuclear medicine and neurology
- Promotion of molecular diagnostics in oncology by implementing a **Next-Generation Sequencing (NGS) Core Facility**
- Oncology Study Centre: Since 2003, 10,000 patients have been treated in **clinical trials**



HIGHLIGHTS OF THE UNIVERSITY MEDICINE SALZBURG

Expertise centre for cleft lip and palate and craniofacial anomalies

- Treatment of complex malformations at the University Hospital for Oral and Maxillofacial Surgery in cooperation with the University Hospitals for Neurosurgery, Pediatric Surgery, ENT, Ophthalmology and Clinical Genetics

University Clinic Centre for Reconstructive Microsurgery for Oral and Maxillofacial Surgery

- Symani surgical robot for microsurgery: Interdisciplinary implementation and research of **reconstruction** techniques using microsurgical procedures (Symani surgical robot)
- 3D Print Lab
- Coordinated cooperation between the University Hospitals for Maxillofacial Surgery, ENT, Neurosurgery, Emergency Surgery and Orthopaedics
- Increase in the number of microsurgical-reconstructive interventions from 2010 to 2019 to **over 120 interventions per year**





UNIVERSITY HOSPITAL SALZBURG
CAMPUS CHRISTIAN-DOPPLER
MEDICAL CENTER

Overview Campus Christian-Doppler-Medical Center

Collegiate leadership

Medical Director:

Univ.-Prof. Dr. Christian Pirich (interim.)

Commercial Director:

Dipl.Engineer Dr. Klaus Offner

Director of Nursing:

Franziska Moser, BA MA

Founded: 1898

Beds: 484*

Employees (heads): 1,457

Areas of care:

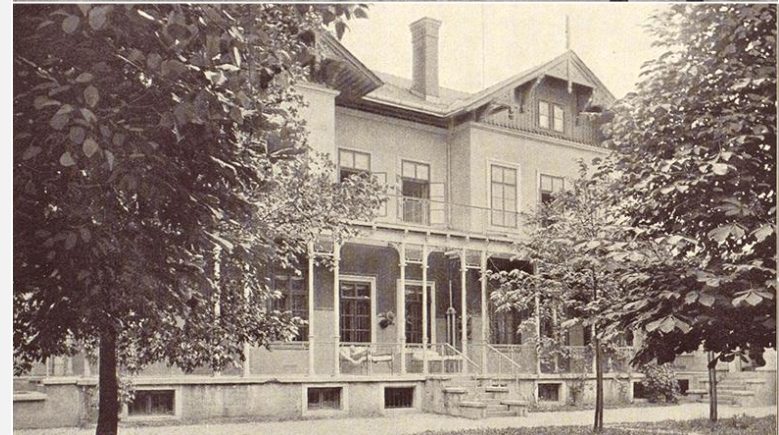
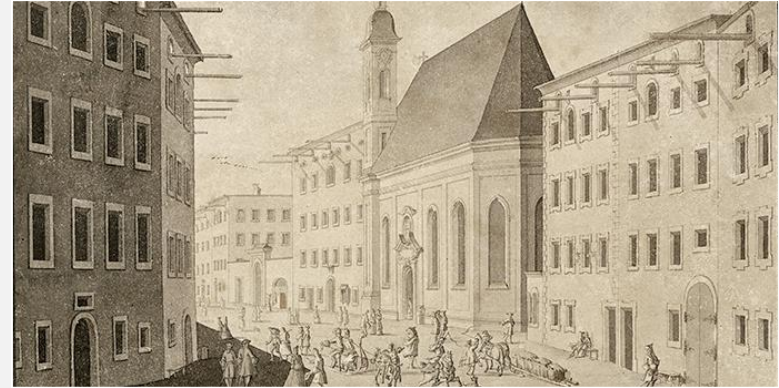
University Hospital specialising in neurological and psychiatric diseases, neurosurgery, neuroradiology, geriatrics; emergency care, clinical psychology

	Per day	Per year
Outpatient rates	445	162,539
Inpatient admissions	27	9,975
Fully inpatients	27	9,865
Day clinic – surgical		41
Other		69
Surgical interventions (neurosurgery)	5	1,945
Number of specialist hospitals: 6		

*Bed status according to the "Regionaler Strukturplan Gesundheit Salzburg 2025" (Salzburg regional structure plan for health 2025), current version.

History of the Christian-Doppler-Medical Center

- **1782–1808** First "asylum" the Bruderhaus in Linzer Gasse. Funded from the *fundus pro furiosis* (top image)
- **1808–1850** Kammerlohrhof at Müllner Hauptstrasse 48 (middle image)
- **5 November 1898** – Opening of the state medical centre for the emotionally disturbed and and mentally ill. Julius Wagner-Jauregg was particularly impressed by the large building site for an extension of the institution (image below)



Christian-Doppler-Medical Center 2022

	Beds	Inpatient Admissions	Outpatient Rates	Employees (FTE)
Neurology	106	4,112	29,423	236,3
Neurosurgery	55	1,900	8,831	113,8
Geriatrics	107	1,077	8,088	159,9
Neuroradiology			25,235	34,3
Adult Psychiatry	132	2,969	77,896	314,9
Child and Adolescent Psychiatry	30	380	5,295	74,1

Intensive care units

- Neurological intensive care unit 9 beds
- Stroke unit 14 beds
- Neurosurgical intensive care unit 12 beds
- Neurosurgery – 3 operating rooms (1,945 operations in 2022)
- Interventional angiography (24/7 neurointervention)
- Neurological emergency department (central outpatient department)

Highlights of the University Medicine Salzburg

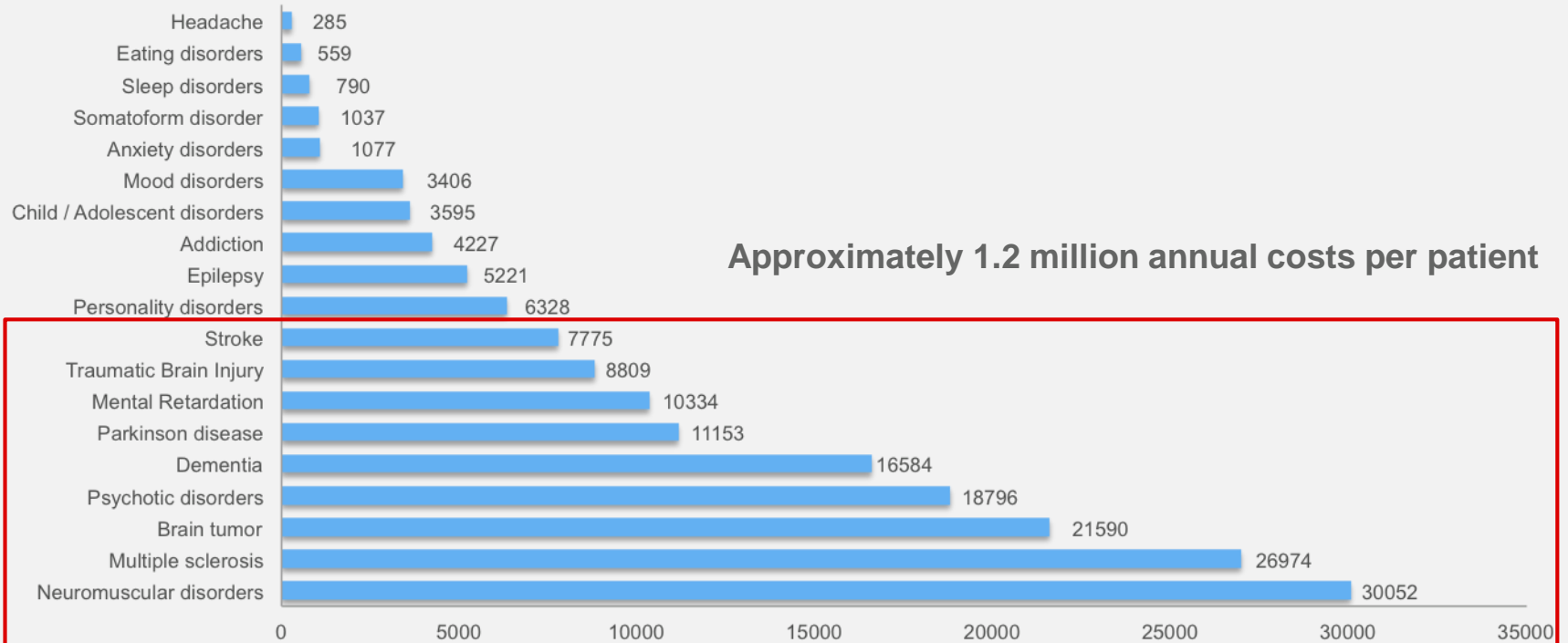
- **Stroke Centre:** Pioneer in Austria –1500 admissions per year – Interdisciplinary neurointervention – 24/7 since 2016 (324 thrombectomies) Research institute for experimental angiography
- **Expertise Centre for Rare and Complex Epilepsies**
European Reference Centre – E-pilepsy and EpiCARE, for rare diseases and epilepsy surgery
- **University Department of Cognitive Neurosciences** in collaboration with Paris Lodron University
- **Neuroscience Institute** with MRI and MEG – numerous FWF and EU projects
- **University Department of Psychiatry:** Maximum care provider in transition (e.g. integrated care – Salzburg model)
- **University Department of Child and Adolescent Psychiatry:** the most modern new building completed in May 2019
- **University Department of Geriatrics:** Unique in Austria
- **University Department of Neurosurgery:** Research laboratory for microsurgical neuroanatomy

Fact sheet brain diseases in Europe

- **30% of the population**, or 220.7 million people in Europe suffer from brain diseases
- Costs for brain diseases in Europe per year amount to¹ **798 billion Euro**
- Average per capita cost: **5,550.00 Euro per year**
- Cost of brain disorders in Europe hits **1 trillion dollars**

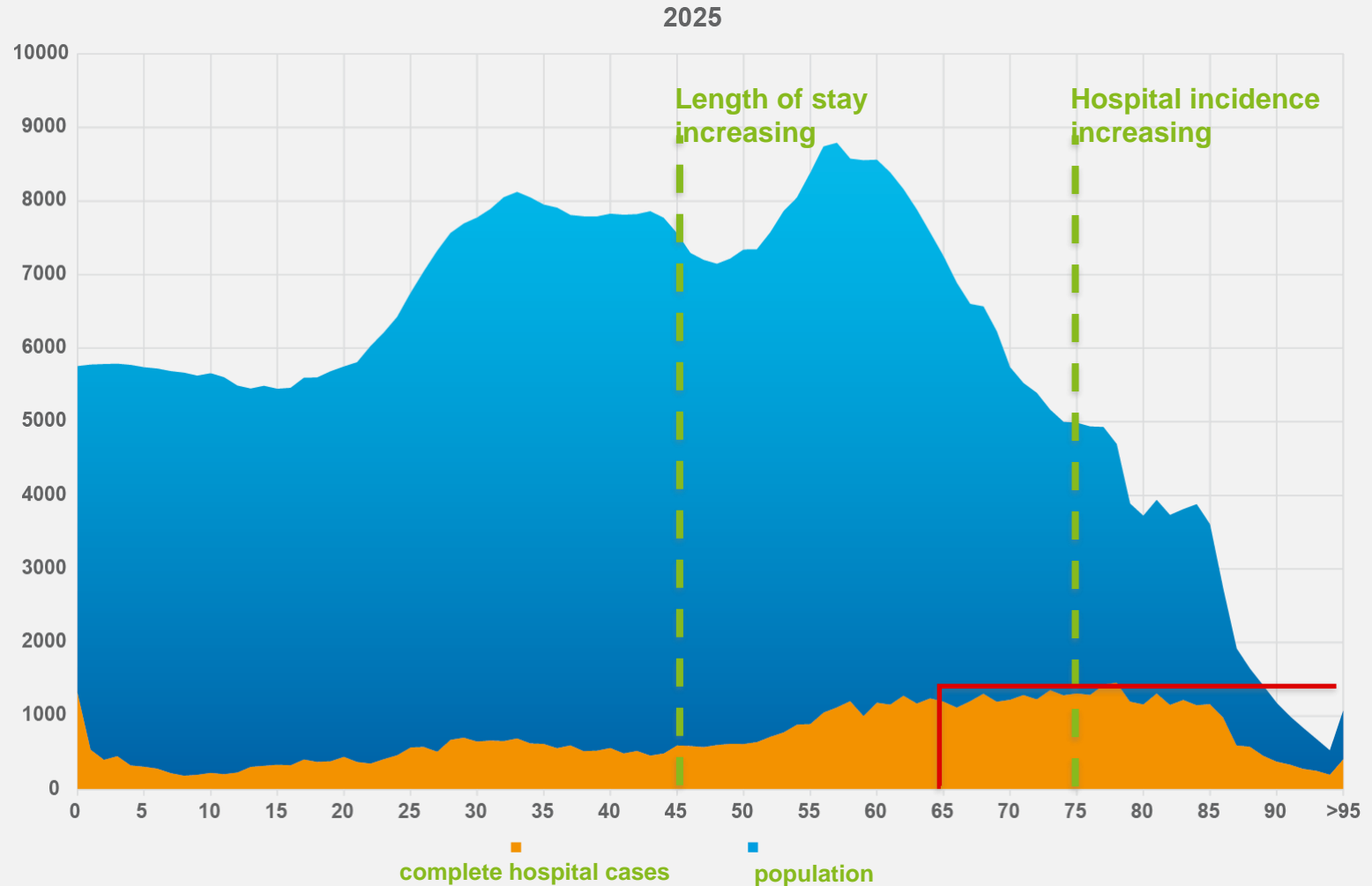
¹ The annual cost of brain disorders in Europe has soared to 798 billion euros (1 Trillion Dollars) and the region is facing a political, social and financial “ticking bomb” as more people fall prey to mental illnesses, researchers report.

Fact sheet on costs per patient (E PPP 2010)



Eur. Neuropsych. (2011) 21, 718–779

Demographic development:



Agenda Brain Disease 2030: Time is Brain

WHO Intersectoral Global Action Plan on Epilepsy and Other Neurological Disorders

- **Investment in medical education**
 - Neurological Intensive Care Medicine
 - Psychiatry and Neurology in General Practitioner Education
- Preventive measures are also the responsibility of each individual.
 - Risk Factors > **Paracelsus 10,000**
 - Early search for specialist help: e.g. depression
 - Recognising the signs of a stroke and Status Epilepticus: **time is brain**
- **Structure Plan for Health > Epidemiology**
- Further intensive research efforts needed





PARACELSUS
MEDICAL
UNIVERSITY

PARACELSUS
MEDICAL
UNIVERSITY



PARACELSUS MEDICAL UNIVERSITY

- We look after our students personally
- We offer an **excellent education with special features**
- We have **successful networks**
- We **put our focus on people**



OFFICE OF THE PRESIDENT



Prof. Dr. Wolfgang Sperl
President



Mag.a Lydia Gruber
Chancellor



Prof. Dr. Christian Pirich
Vice-President
for Teaching and Learning



Prof. Dr. Ludwig Aigner
Vice-President
for Research



Prof. Dr. Herbert Reitsamer
Vice-President for
Innovation and Digitization



Prof. Dr. med. Theodor Fischlein
Vice-President,
Nuremberg, Germany



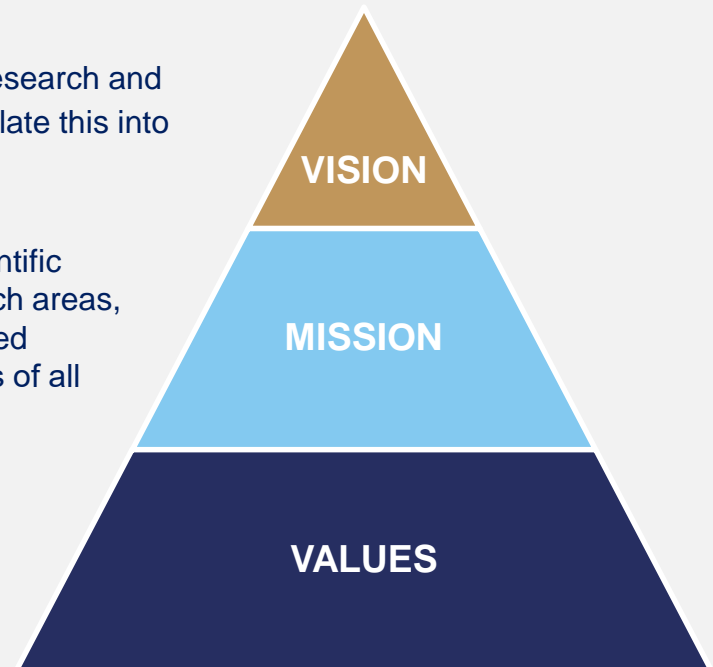
Dr. Stefan Kolb
Vice Chancellor
Nuremberg, Germany

MISSION STATEMENT

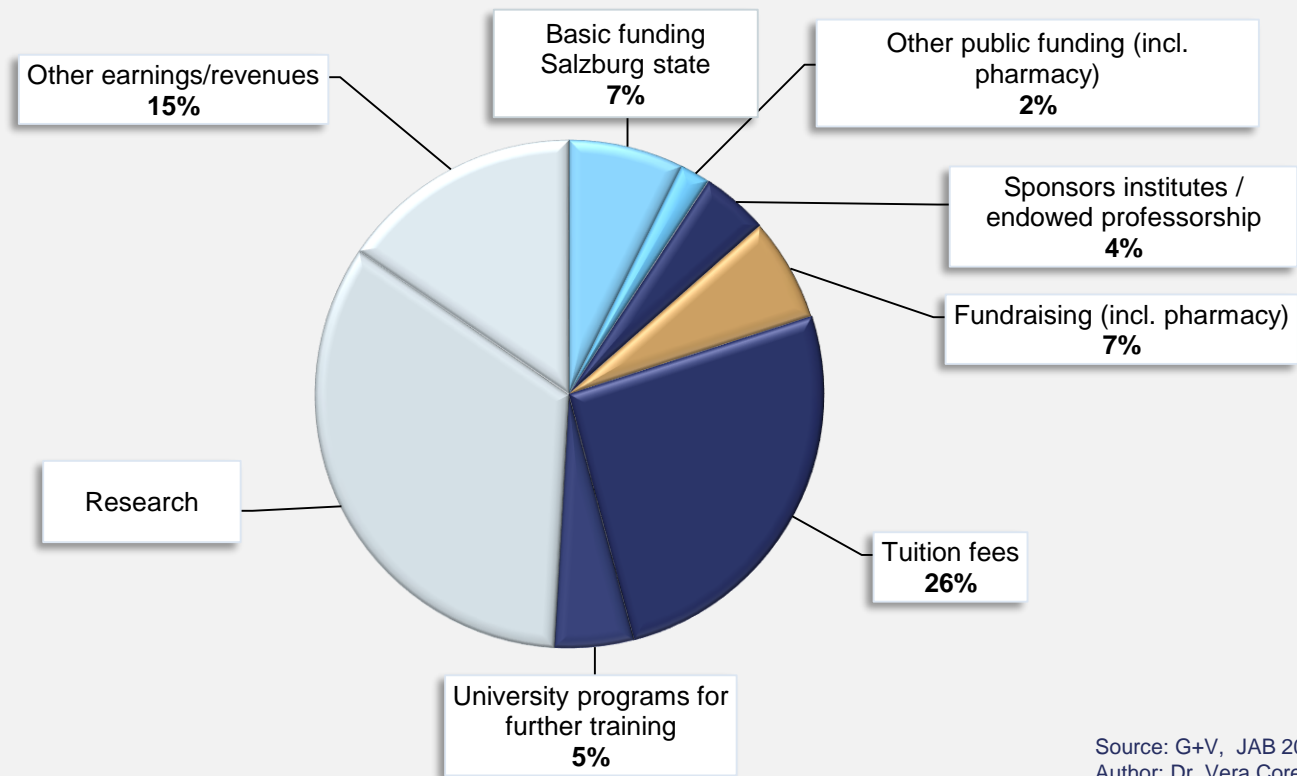
Through our excellent education and training, fields of excellence in research and innovative strength, we constantly generate new knowledge and translate this into practice. **We want to take a leading role in Europe.**

We offer our students quality education founded on leading-edge scientific research and individual support. We set standards in specialty research areas, and are in-demand as a cooperation partner. We are actively networked nationally and internationally. The university's values guide the actions of all our employees, students and alumni.

Responsibility / Trust / Respect /
Professionalism / Entrepreneurship

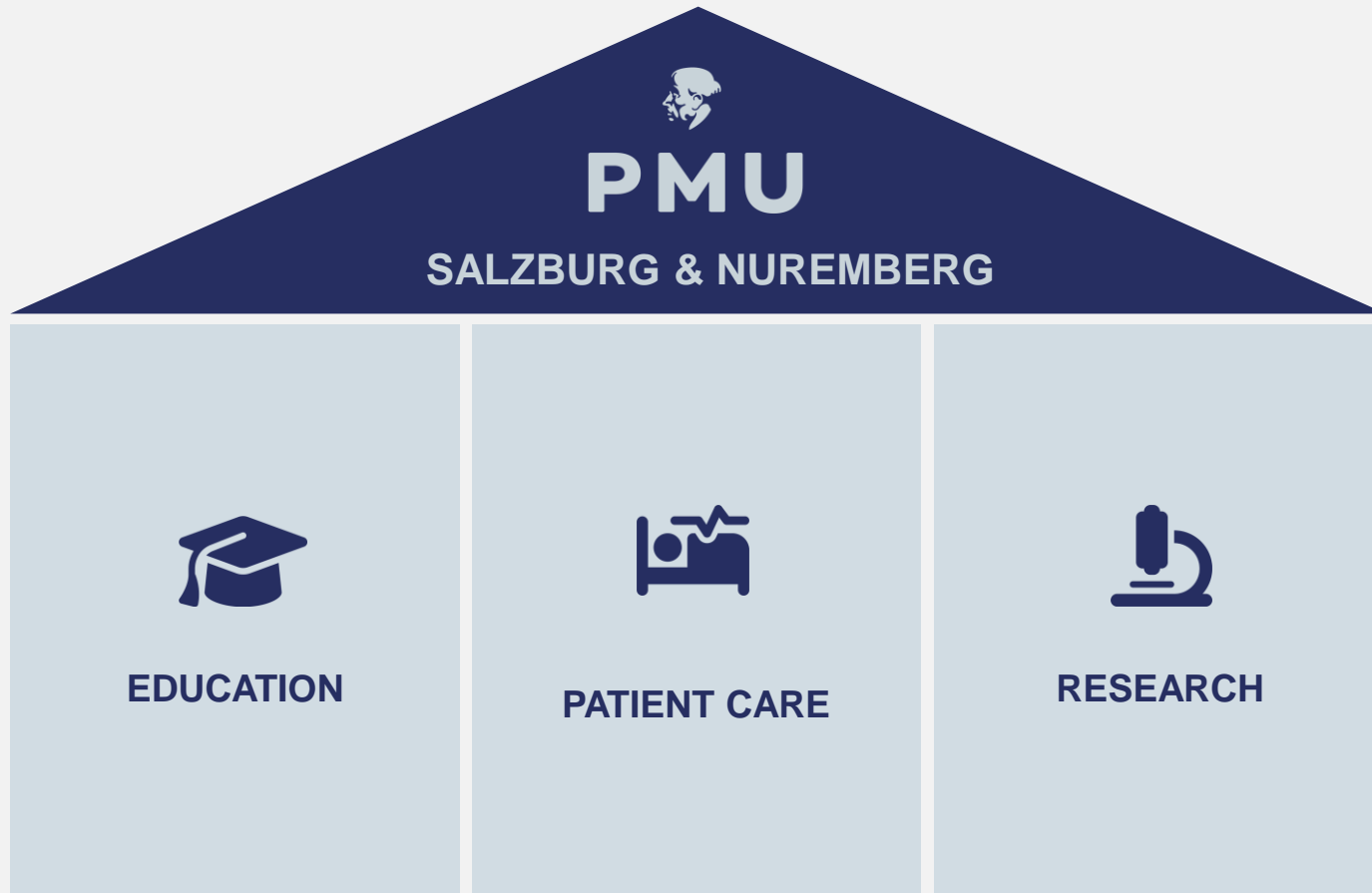


NON-PROFIT PRIVATE FOUNDATION



Source: G+V, JAB 20/21
Author: Dr. Vera Coreth

ABOUT US



DEANS OF FACULTIES

SALZBURG



Prof. Dr. Daniela Schuster,
Intermist Dean, Faculty of
Pharmacy



ao. Prof. Dr. Elmar Aigner,
Aigner, Dean of Education,
Faculty of Medicine



ao. Prof. Dr. Monika Killer-
Oberpfalzer, Dean of
Research, Faculty of Medicine



Prof. Dr. Dr. h.c. Jürgen
Osterbrink, Dean,
Faculty of Nursing Science

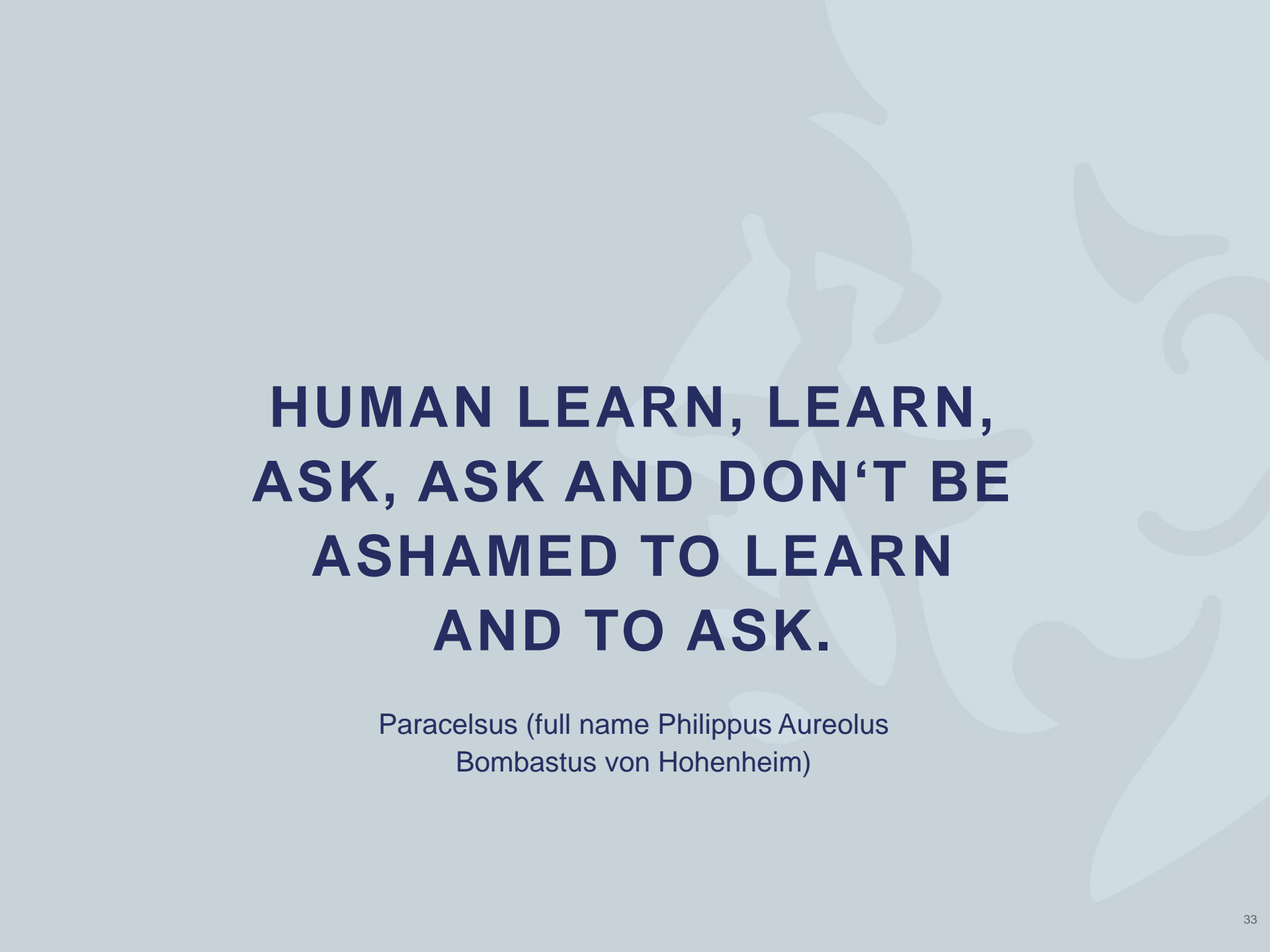
NUREMBERG



Prof. Dr. Thomas
Papadopoulos, Dean of
Education and Clinical Matters



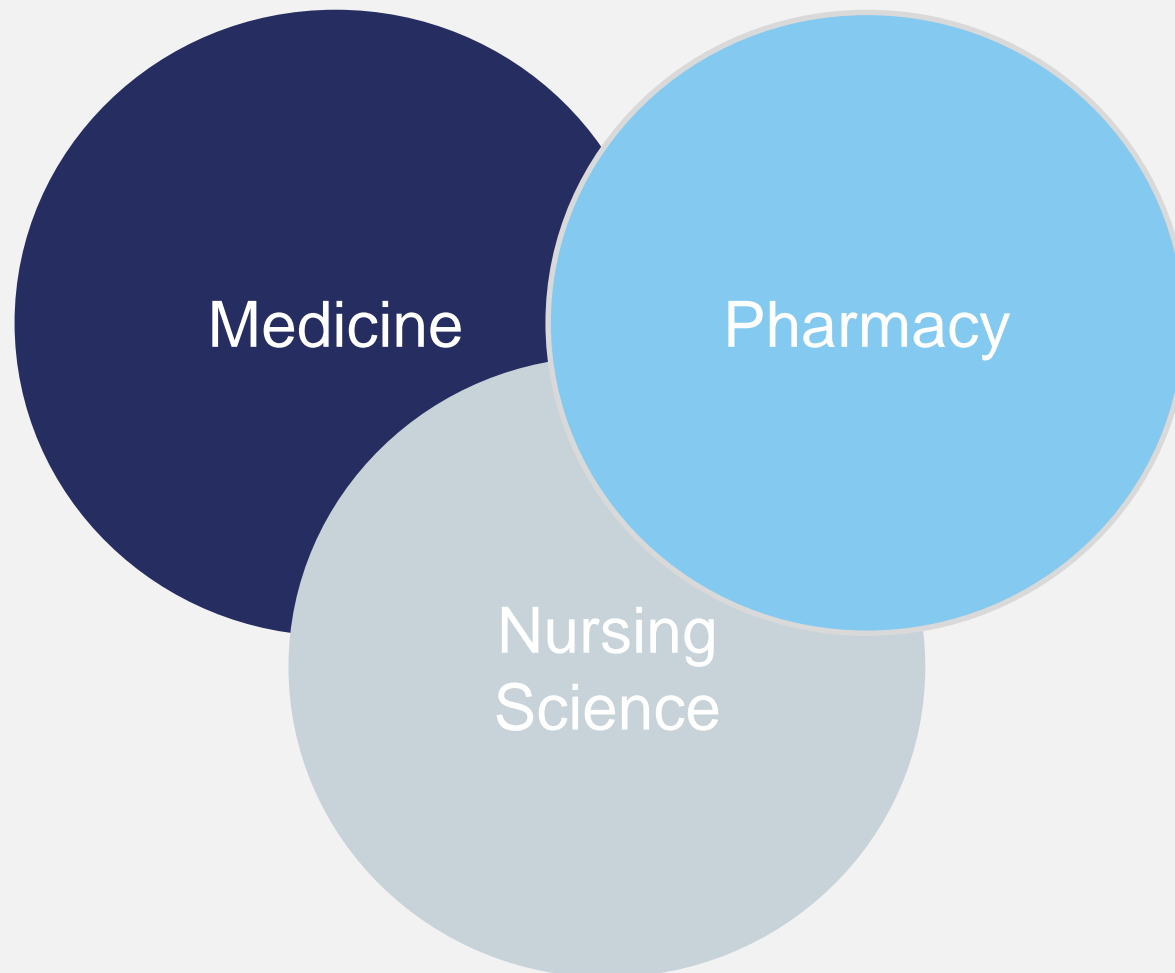
Prof. Dr. Sascha Pahernik,
Dean of Research

A faint, light blue background illustration of a person's face and hands. The face is on the right side, looking towards the left. The hands are positioned in the center, with fingers spread, as if gesturing or holding something. The overall style is minimalist and artistic.

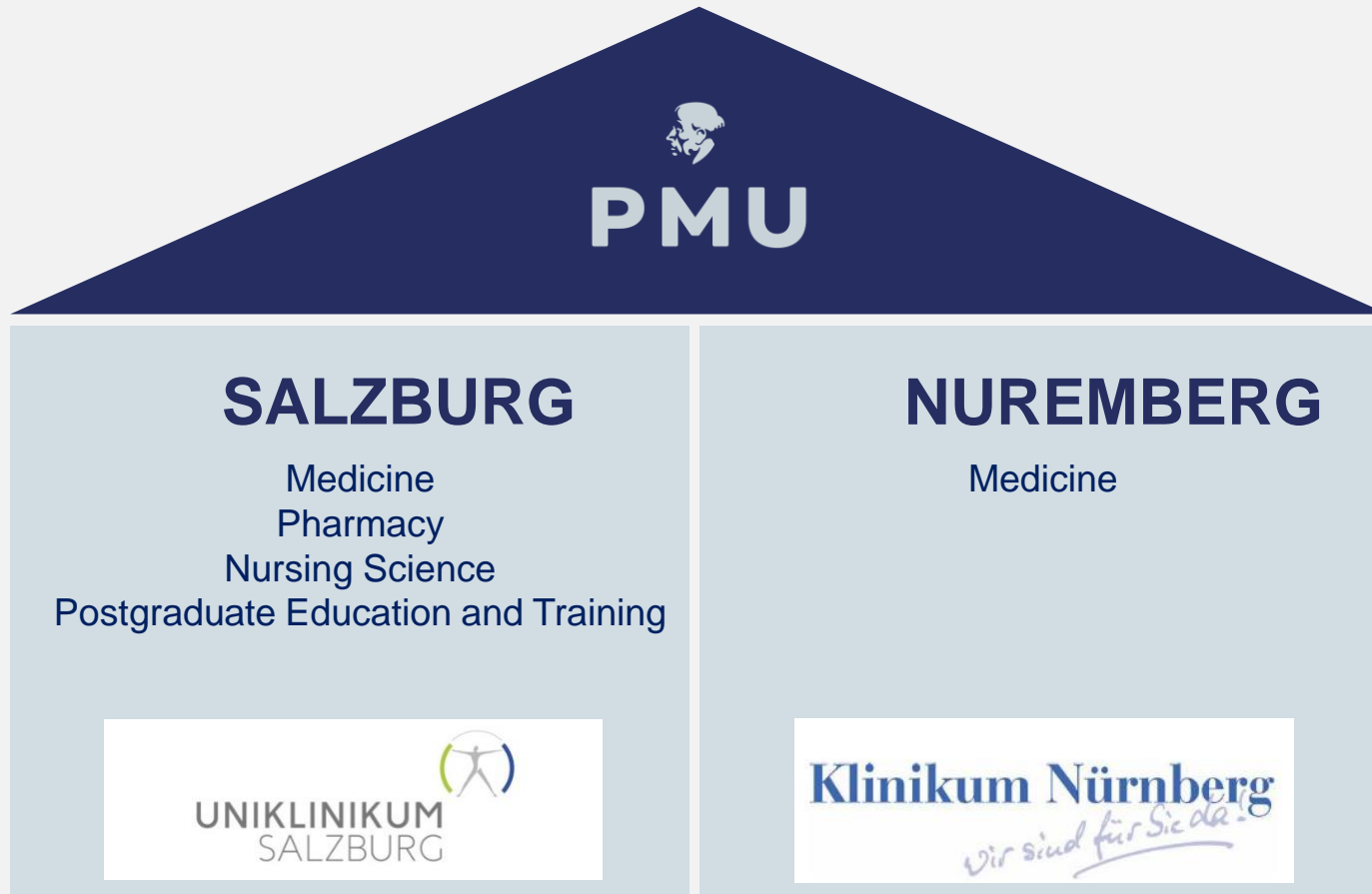
**HUMAN LEARN, LEARN,
ASK, ASK AND DON'T BE
ASHAMED TO LEARN
AND TO ASK.**

Paracelsus (full name Philippus Aureolus
Bombastus von Hohenheim)

EDUCATION



EDUCATION



EDUCATION

HIGHER EDUCATION & PROFESSIONAL TRAINING

Degree Programs

Doctor of Medicine degree (Dr. med. univ.)

Bachelor's and Master's degrees in Pharmacy
(BSc/Mag.pharm.)

Bachelor's degree^{impact} (BScN)

Bachelor's degree in Nursing Science Online (BScN)

Master's degree in Nursing Science (MScN)

Master's degree in Advanced Nursing Practice (MSc ANP)

Master's degree Public Health Online (MScPH)

Doctorate program in Medical Science (Ph.D.)

Doctorate program in Nursing & Allied Health Sciences
(Ph.D.)

Doctorate program in Nursing Practice & Leadership
Ph.D.)

* subject to accreditation by AQ Austria

University Courses and Further Education

University Course in Early Life Care (MSc)

University Course in Health Sciences & Leadership
(MSc)

University Course in Palliative Care (MSc)

Special University Course in Surgical Nursing

Special University Course in Intensive Care Nursing

University Course Special training for anesthesia care

University Course Nursing management / Nursing
Education

University Course Mental health and nursing care

Course on Didactics in Higher Education

Clinical Research Center Salzburg

Management & Leadership

Medical Simulation Center Salzburg

Spring School in Clinical Assessment

Training and Surgical courses

EDUCATION

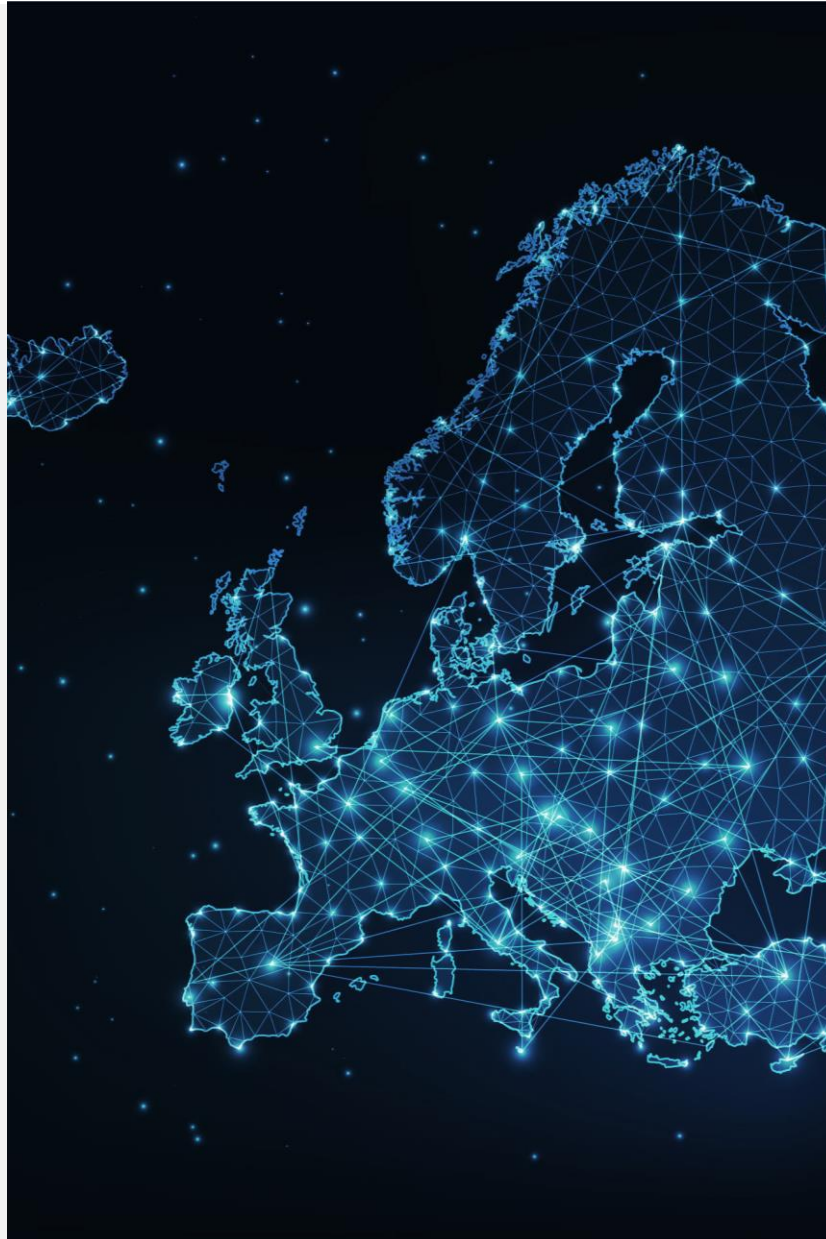
COOPERATION PARTNERS

- **Mayo Medical School / Mayo Clinic**, Minnesota, USA
- **Yale University**, New Haven, USA
- **Stanford University**, USA
- **University of Northern Florida**, Jacksonville, USA
- **Old Dominion University**, Norfolk, VA, USA
- **Johns Hopkins University**, Baltimore, Maryland, USA
- **Kathmandu University School of Medical Sciences (KUSMS)**, Dhulikhel Hospital, Nepal
- **University of Glasgow**, Scotland
- **University of Cape Town**, South Africa
- **Fachhochschule, Salzburg**, Austria
- **Paris Lodron Universität, Salzburg**, Austria
- **Nuernberg Institute of Technology, Georg Simon Ohm Nuremberg**, Germany



Cooperation Partners, Erasmus+

- **Kaajani University of Applied Sciences**, Finland
- **Technische Universität Braunschweig**, Germany
- **Charles University**, Czech Republic
- **University of Patras**, Greece
- **University of Salento**, Italy
- **Riga Stradins University**, Latvia
- **Lehrkrankenhäuser und Lehrpraxen** in Österreich und Deutschland
- **University of Alicante**, Spain
- **Egas Moniz University**, Portugal
- **Poznan University of Medical Sciences**, Poland



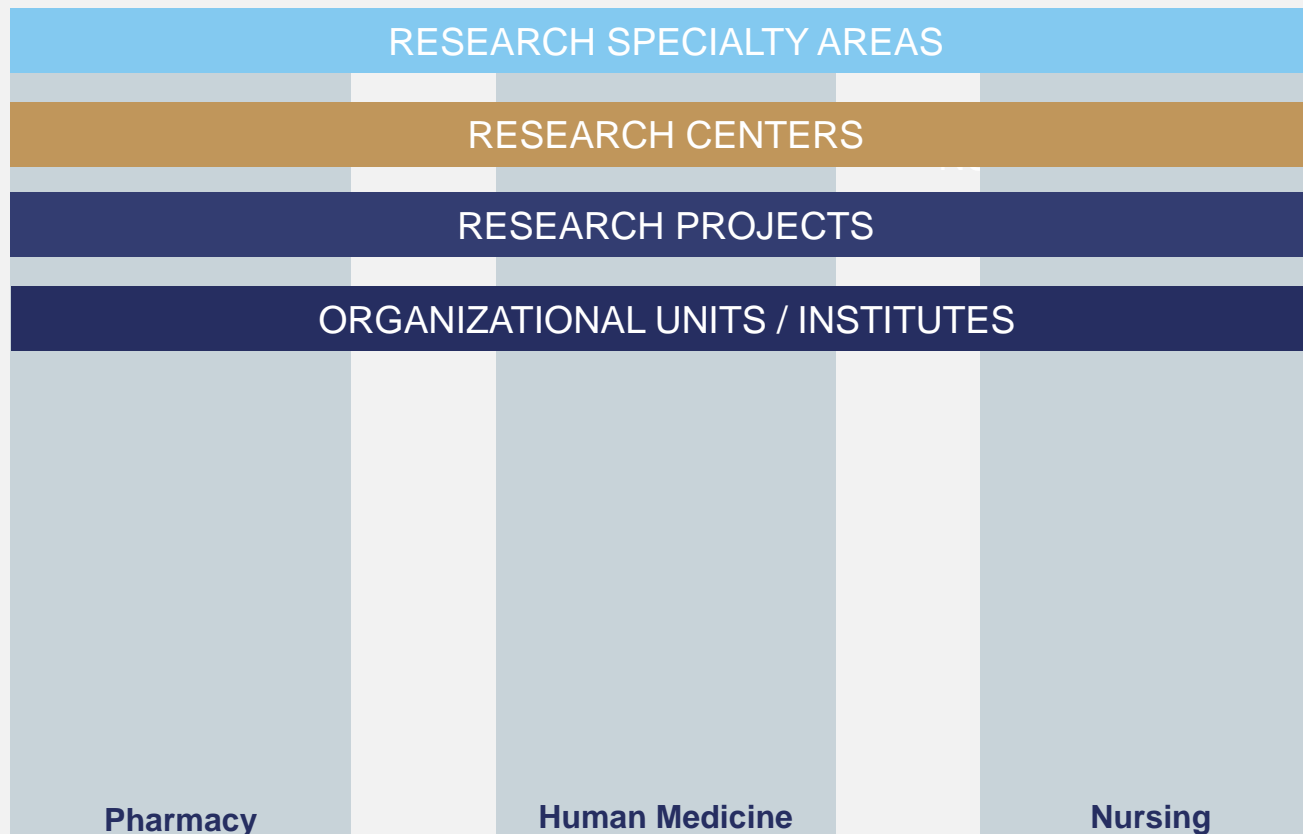
A faint, light blue background graphic showing a hand holding a globe, positioned on the right side of the slide.

**RESEARCH IS ALWAYS THE
BEGINNING OF NEW BOUNDARIES.**

Prof. Dr. Hans-Jürgen Quadbeck-Seeger



RESEARCH ON CAMPUS

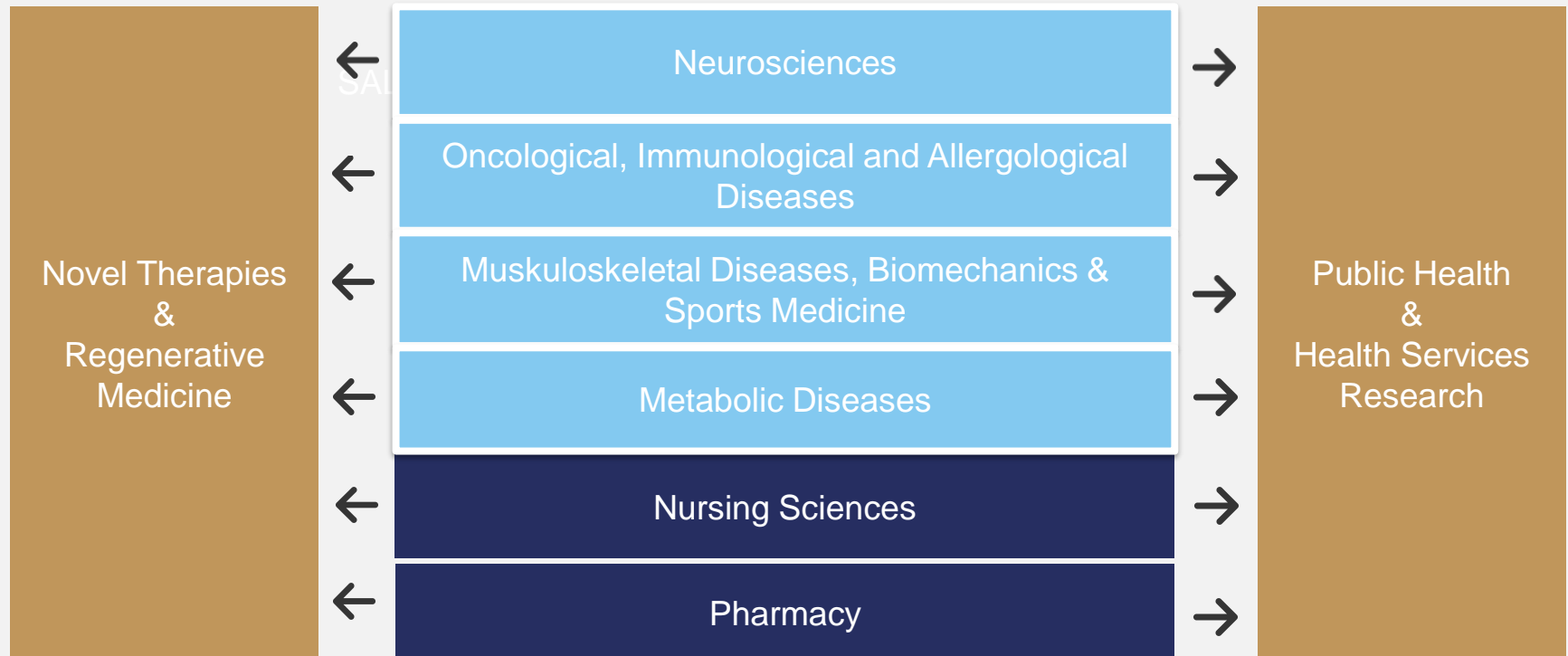


RESEARCH ON CAMPUS

Research &
Innovation Center

Research Speciality Areas

Research &
Innovation Center

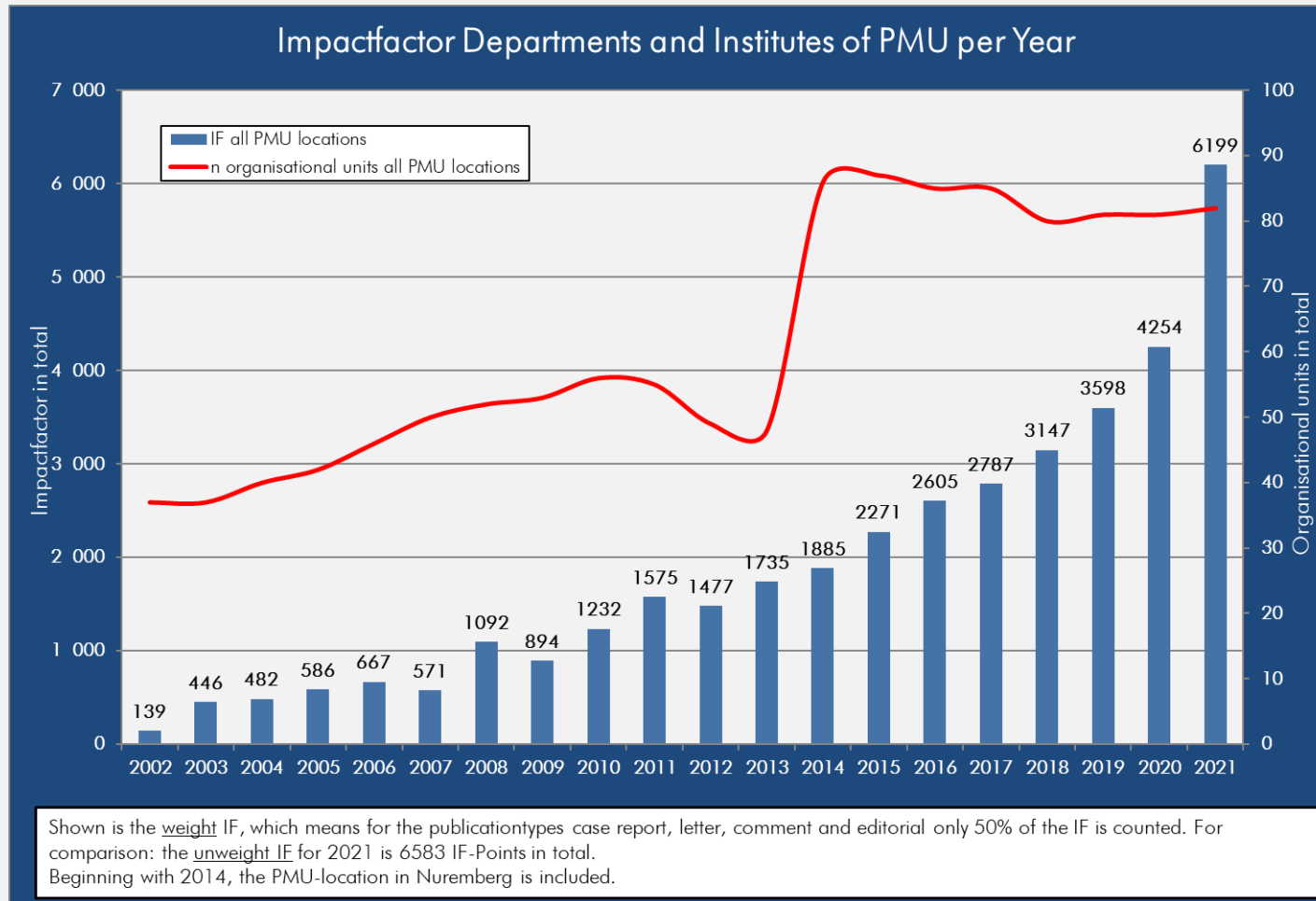


A faint, light blue background illustration of a person's face and hands. The face is on the right side, looking towards the left. The hands are positioned in front of the face, with fingers spread. The overall style is minimalist and artistic.

SCIENTIFICALLY RELEVANT DATA AND FACTS

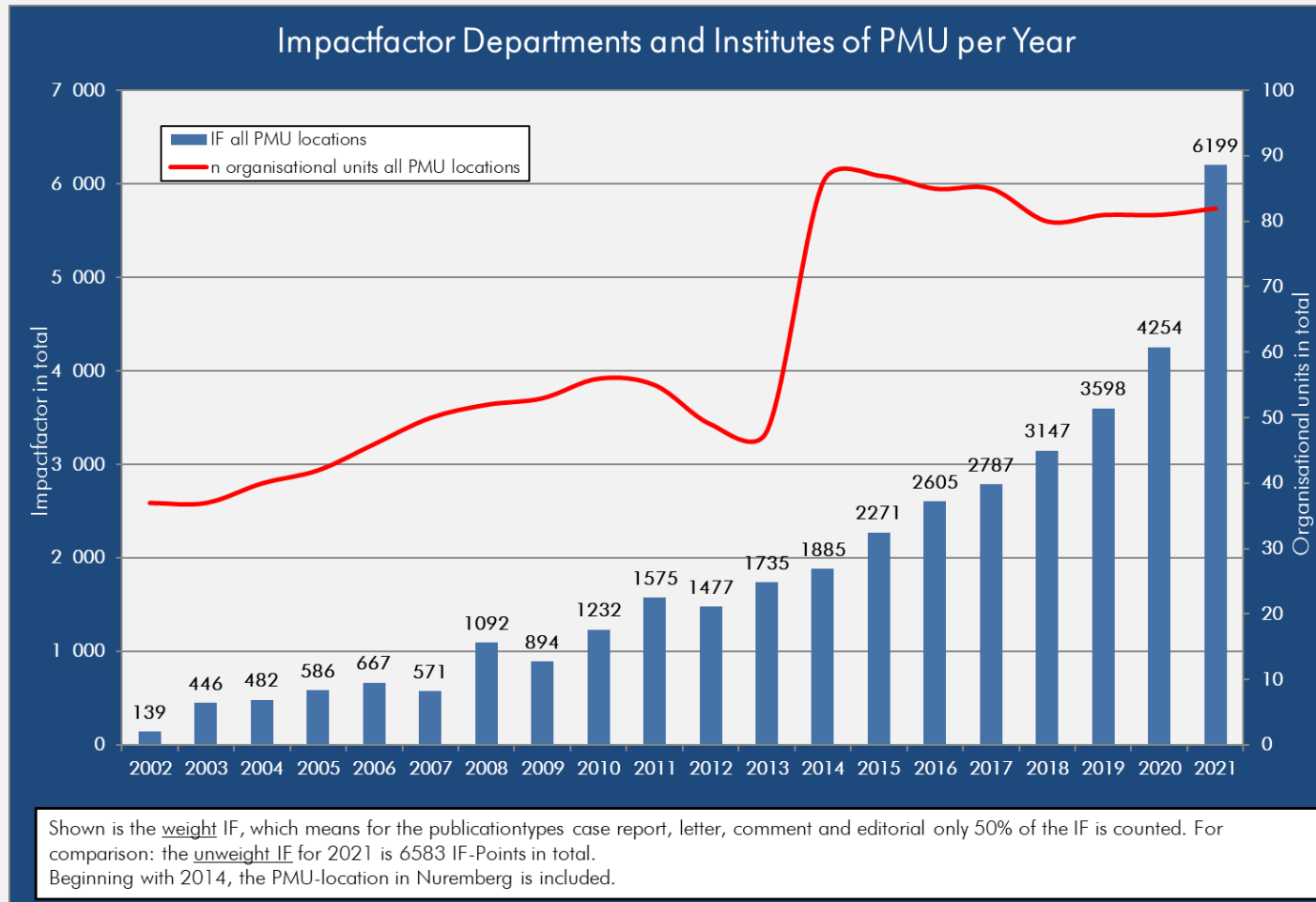


IMPACT FACTOR



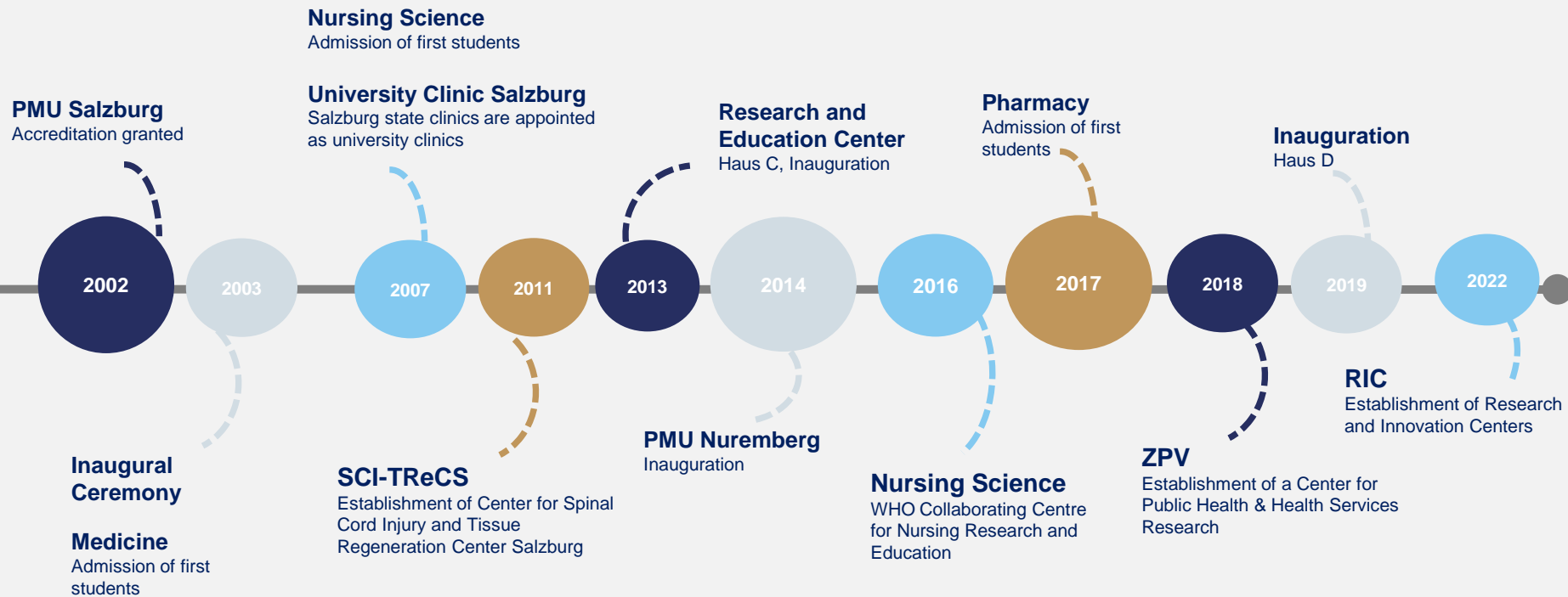


PUBLICATIONS



TIMELINE

TIMELINE





PMU TODAY

- **1.705** Students
- **4.301** Graduates
- **Over 470** Employees



LANDESKLINIK
ST.VEIT

TEACHING HOSPITAL OF PMU

TREATMENT IN A HEALTHY CLIMATE ENVIRONMENT





Overview of St. Veit State Hospital

Collegiate leadership

Medical Director:

Chief of Staff Physician University Lecturer
Dr. Bertram Hölzl

Commercial Director:

Hubert Hettegger, MBA MAS

Director of Nursing:

Mag. Karl Schwaiger

Regional management:

Mag. Reinhard Baumgartinger

Founded: 1913 as a lung sanatorium
to fight tuberculosis

Beds: 95*

Employees (heads): 222

* Bed status according to the "Regionaler Strukturplan Gesundheit Salzburg 2025"
(Salzburg regional structure plan for health 2025), current version

	Per day	Per year
Outpatient rates	94	34,354
Inpatient admissions	7	2,549
Fully inpatient	7	2,546
Other		3
Number of specialist hospitals: 3		

Areas of care:

State hospital in a healthy environment with a focus on internal medicine, innovative geriatrics, innovative geriatric medicine, special psychiatric care.

Teaching Hospital of PMU

Rehabilitation in a healthy climate environment

- **Oncological rehabilitation**

Cooperation between VAMED and SALK
 120 beds for patients
 Duration of stay: 21 days (standard)

- **Rehaklinik Sonnberg**

Cooperation between SALK and prominent rehabilitation for 49 patients, primarily from Salzburg, but also from all over Austria (psychiatric rehabilitation)
 Duration of stay: 6 weeks (standard)

- **Child/youth rehabilitation**

Cooperation between VAMED and SALK

- 20 beds for children/adolescents with cancer
- 50 beds for family-oriented aftercare
- 12 beds for children/adolescents with metabolic diseases and problems of the digestive system

Duration of stay: 3 weeks (standard)



LANDESKLINIK
TAMSWEG

TEACHING HOSPITAL OF PMU,
MED UNI VIENNA & MED UNI GRAZ

PRIMARY CARE LUNGAU



Overview of Tamsweg State Hospital

Collegiate leadership

Medical Director:

Chief of Staff Dr. Gregor Labus

Business Director:

Mag.^a Andrea Schindler-Perner, MBA

Nursing Director:

Martina Moser

Regional management:

Mag. Reinhard Baumgartinger

Founded: 1908

Beds: 105*

Employees (heads): 325

Areas of care:

General surgery, internal medicine, acute geriatrics, palliative care, anaesthesia and intensive care, gynaecology and obstetrics, interdisciplinary day clinic, orthopaedics and traumatology, central outpatient department (including wound treatment), specialist practice for radiology; Teaching Hospital of Paracelsus Medical University, Medical University of Vienna and Medical University of Graz

*Bed status according to the "Regionaler Strukturplan Gesundheit Salzburg 2025" (Salzburg regional structure plan for health 2025), current version.

	Per day	Per year
Outpatient rates	210	76,526
Inpatient admissions	13	4,575
Fully inpatients	10	3,828
Day clinic – surgical	2	588
Day clinic – chemotherapy		2
Other		157
Births	1 every two days	151
Surgical procedures	6	2,199
Number of specialist hospitals or institutes: 6		

Tamsweg State Hospital



Chief of Staff
Dr. Gregor Labus
Medical Director



Mag.ª Andrea
Schindler-
Perner, MBA
Business
Director



Martina Moser,
Nursing Director



Mag. Reinhard
Baumgartinger
Regional
Director

- Convenient location and graduated structure for the Lungau region
- Focus on short-shaft hip prosthetics
- Day clinic for surgical patients and care for conservatively treated patients
- Aftercare in acute geriatrics as well as remobilisation
- External health providers within the state hospital: specialist surgeries, Salzburg Gebietskrankenkasse (Regional health insurance body)

Founded: 1908

Primary care Lungau

General surgery, anaesthesia, gynaecology and obstetrics,
Internal medicine, orthopaedics and traumatology

Completely refurbished by 2019



105



325



LANDESKLINIK
HALLEIN

LEHRKRANKENHAUS DER PMU,
MED UNI WIEN

PRIMARY CARE
TENNENGAU



Overview of Hallein State Hospital

Collegiate leadership

Medical Director:

Ltd. OÄ Dr. Silvia Reich-Weinberger
(interim.)

Business Director:

Mag. Reinhard Baumgartinger

Director of Nursing:

Mag. Karl Schwaiger

Founded: 1907

Beds: 137*

Employees (heads): 345

Areas of care:

General surgery, internal medicine, innovative geriatrics, palliative care, anaesthesia and intensive care, Gynaecology and Obstetrics, Radiology, special emphasis on orthopedics & traumatology
Teaching Hospital of Paracelsus Medical University and Medical University of Vienna

	Per day	Per year
Outpatient rates	126	45,908
Inpatient admissions	16	5,822
Fully inpatients	13	4,577
Day clinic – surgical	3	1,199
Other		46
Births	3	917
Surgical procedures	8	3,085
Number of specialist hospitals: 5		

*Bed status according to the "Regionaler Strukturplan Gesundheit Salzburg 2025" (Salzburg regional structure plan for health 2025), current version.

Hallein State Hospital



Ltd. OÄ
Dr. Silvia Reich-
Weinberger
Medical Director
(interim.)



Mag.
Karl Schwaiger
Director of Nursing



Mag.
Reinhard Baumgartinger
Commercial Director

- Close location and graduated offer for the Tennengau
- Intense cooperation with the University Hospital Salzburg – Performance comparison
- Focus on the area of day clinic

Founded: 1907

Primary care Tennengau

Surgery, anaesthesia, gynaecology and
obstetrics, internal medicine, trauma surgery
satellite department, radiology



137



345

DaVinci surgical and training robot

- **DaVinci robotic-assisted surgery** at State Hospital Hallein available for minimally-invasive procedures
- **Teaching console** for training young surgeons under the supervision of experienced senior physicians with the ability to intervene
- **Specialization:** hernia surgery, proctology, outpatient procedures
- Global **network** of robotic surgeons
- **First-class healthcare** across Salzburg





SA | LK

SALZBURGER LANDESKLINIKEN

FIGURES, DATA, FACTS

Key figures

SALK total	2020 1-12	2021 1-12	2022 1-12	Diff. 21-22*
Assignable beds	1,701	1,644	1,628	- 1%
Inpatient admissions	70,376	72,590	73,612	1,4%
Completely inpatient admissions	61,242	63,432	64,300	1,4%
Day clinic – surgical	7,680	7,900	8,159	3,3%
Day clinic – chemotherapy*	272	343	242	- 29,4%
Other**	1,182	915	911	- 0,4%
Outpatient rates	1,040,042	1,135,779	1,184,163	4,3%
Days of hospitalisation	447,800	469,618	478,638	1,9%
Ø Length of stay in days (full inpatient cases)	7,1	7,2	7,1	- 0,3%
Σ Employees (full-time equivalents)	5,340	5,416	5,486	1,3%
Σ Employees (heads) as per 31st Dec.	6,576	6,726	6,824	1,5%

* Outpatient cases since 2019: increase from 783 (2018) to 14.341 cases (2019) ** Zero-day stays (non-allocable services)

SALK employees

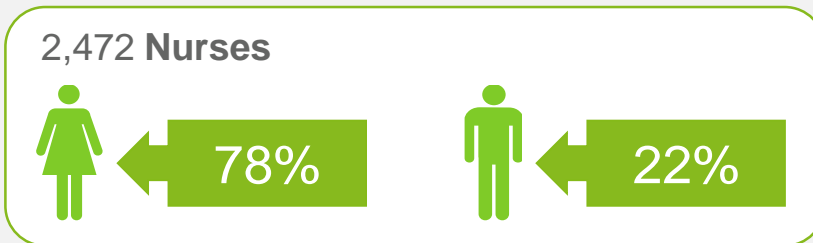
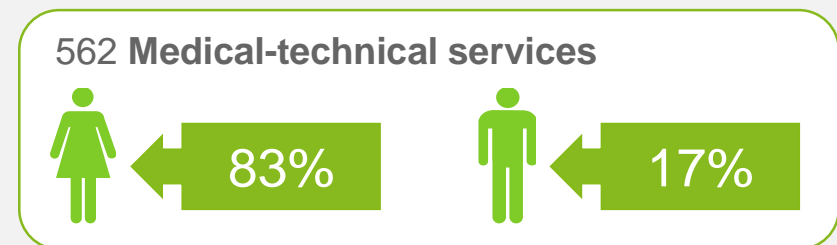
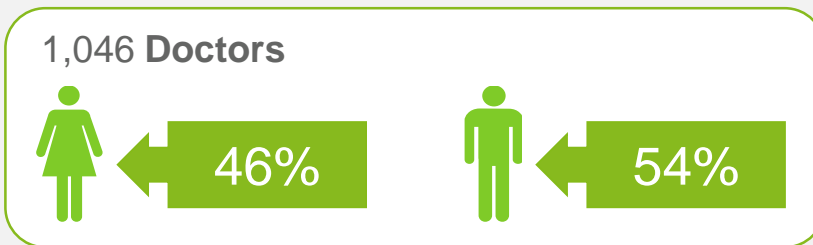
Usage groups (FTE)	2020 1–12	2021 1–12	2022 1–12
Doctors	946.42	949.58	949.69
Non-medical academics	121.87	127.30	132,31
Midwives	45.35	50.16	48.56
Nurses	1,964.21	1,947.37	1,911.31
Med. Techn. Services	445.42	449,46	455.39
Inpatient support service	432.02	485,36	537.06
of which nursing assistance	123.04	178.01	222.90
Administrative personnel	818.09	833.58	852.29
Operational personnel	420.89	421.58	434.01
Other staff	145.27	152.47	165.37
Σ Employees (full-time equivalents)	5,339.55	5,416.86	5,485.99
Σ Employees (heads) as per 31 Dec.	6,576.00	6,726.00	6,824.00

Corporate figures

SALK total in € million	2022 1–12
Staffing costs	501.0
Medical expenses	171.3
Non-medical material costs	118.4



Selected occupational groups by gender (heads)



figures 2022

Employee structure

Employees part-time/full-time



46%



54%

Employees female/male (full-time equivalents)



66%



34%

Management female/male



37%



63%

PURCHASING AND LOGISTICS

Logistics Management

Annually

- Approximately 400,000 internal **patient transport runs** (Salzburg General Hospital & Christian Doppler Medical Centre)
- Approx. 320,000 **goods transport runs** Salzburg (General Hospital & Christian Doppler Medical Centre)
- 2,500 tonnes of **waste** (all sites, equivalent to a local community of 5,000 inhabitants)
- Approx. 230,000 **inbound delivery items** (excluding medication and food)
- Approximately 173,000 **order items** (excluding medicines and food)
- Processing of approx. 90 large to medium-sized **procurement procedures**



SERVICE MANAGEMENT AND HOSPITAL CATERING

Linens supply Salzburg State Hospitals (University Hospital Salzburg, Christian-Doppler-Medical Center and State Hospitals St. Veit, Hallein, Tamsweg)

Annually

- Delivery of almost **40,000 laundry containers (2100 tonnes of laundry)** and, of course, pick them up.
- Approximately **100,000 pieces of clothing** for our employees
- Name-specific clothing for more than **5,500 employees** (excluding OR staff)
- Washing about 5 million pieces of clothing (name-related clothing + area clothing)
- € 4.8 – 5.0 million annual costs



SERVICE MANAGEMENT AND HOSPITAL CATERING

Challenges of an industrial kitchen

- **Preparation of up to 8,000 meals a day:**
 - 1,700 breakfasts
 - Cook & Chill: 3,800 servings of lunch and dinner
 - Cook & Serve: up to 2,000 servings
(Regional facilities and CDC canteens, bistro, three regional canteens, kindergartens (two in-house and external))
- **Annual food consumption:**
- 350 tonnes of vegetables (corresponds to the consumption of the municipality of Wals-Siezenheim)
- 140 tonnes of fruit
- 120 tonnes of meat
- 28 tonnes of fish
- 580,000 litres of soup
- 1 million pastries
- Seal of quality „Good to know“ : fresh meat and fresh eggs from regional production
- Consideration of dietary requirements





PARACELSUS
MEDICAL
UNIVERSITY



SA | LK

SALZBURGER LANDESKLINIKEN

TRENDSETTING CONSTRUCTION MEASURES



Car park Campus Salzburg General Hospital

The new multi-storey car park, which was built with an investment volume of 18 million euros, went into partial operation at the beginning of 2015 and enables an almost car-free campus. Full operation since spring 2017 after completion of the entrance to the new laboratory building.

Completed 2017



Institute building (Haus B)

Synergies through the merging of the University Institutes of transfusion medicine, central laboratory including microbiology and pathology. An energy pile plant uses concrete as a storage for heating and cooling. Around 80% of the heating and 40% of the cooling requirements are therefore covered in an environmentally friendly way.

Completed 2018



Interdisciplinary ward University Department of radiotherapy and nuclear medicine

A modern ward station is installed in a crossbeam, 62 metres long, above the existing building. Committed to radiation protection, with beautiful views and built-in medical connections.

Completed 2019



New building for child and adolescent psychiatry

In the barrier-free new building there is a therapy centre, the restructured outpatient clinic as well as the ward, which has been extended to 30 beds and 10 day-clinic places. The State of Salzburg invested 11.2 million euros.

Completed 2019



Tamsweg State Hospital

General renovation of around 23 million euros during ongoing operation. A photovoltaic system and wood in the interior are part of the commitment to the SALZBURG 2050 climate and energy strategy.

Completed 2019



Oncology – new building (Building L)

A sustainable new building solution for oncological care of the Internal Medicine III, which is spread over five different locations, is being developed on the Salzburg General Hospital site, costing approx. 48,5 million euros.

Start of construction in 2023

Planned completion: 2026



Building B with transregional Trauma Centre

Building B will be on a site of around 25.275 m² and over seven levels, costing around 417 million euros. Merger of the university clinic for orthopaedics and traumatology with the Emergency Hospital Salzburg UKH (AUVA) to a new trauma centre at the location of the University Hospital Salzburg.

Planned completion: 2033



Addiction Treatment Center and new parking garage - Campus Christian-Doppler-Medical Center

Due to the construction of the addiction treatment center (Salzburg Wohnbau/Addiction Aid) on the current parking area, the forecourt including the entrance area will be redesigned and a parking garage will be built (parking space management is the same as at the Salzburg General Hospital). Costs approx. 5.8 million euros.

Planned completion: 2024/2025



Acute care and gerontological psychiatry Christian-Doppler-Medical Center

Planning of a new building for the central psychiatric outpatient department, admission and geriatric psychiatric ward as well as therapy rooms due to excessive overload of the outpatient structure.

Planned completion: 2026

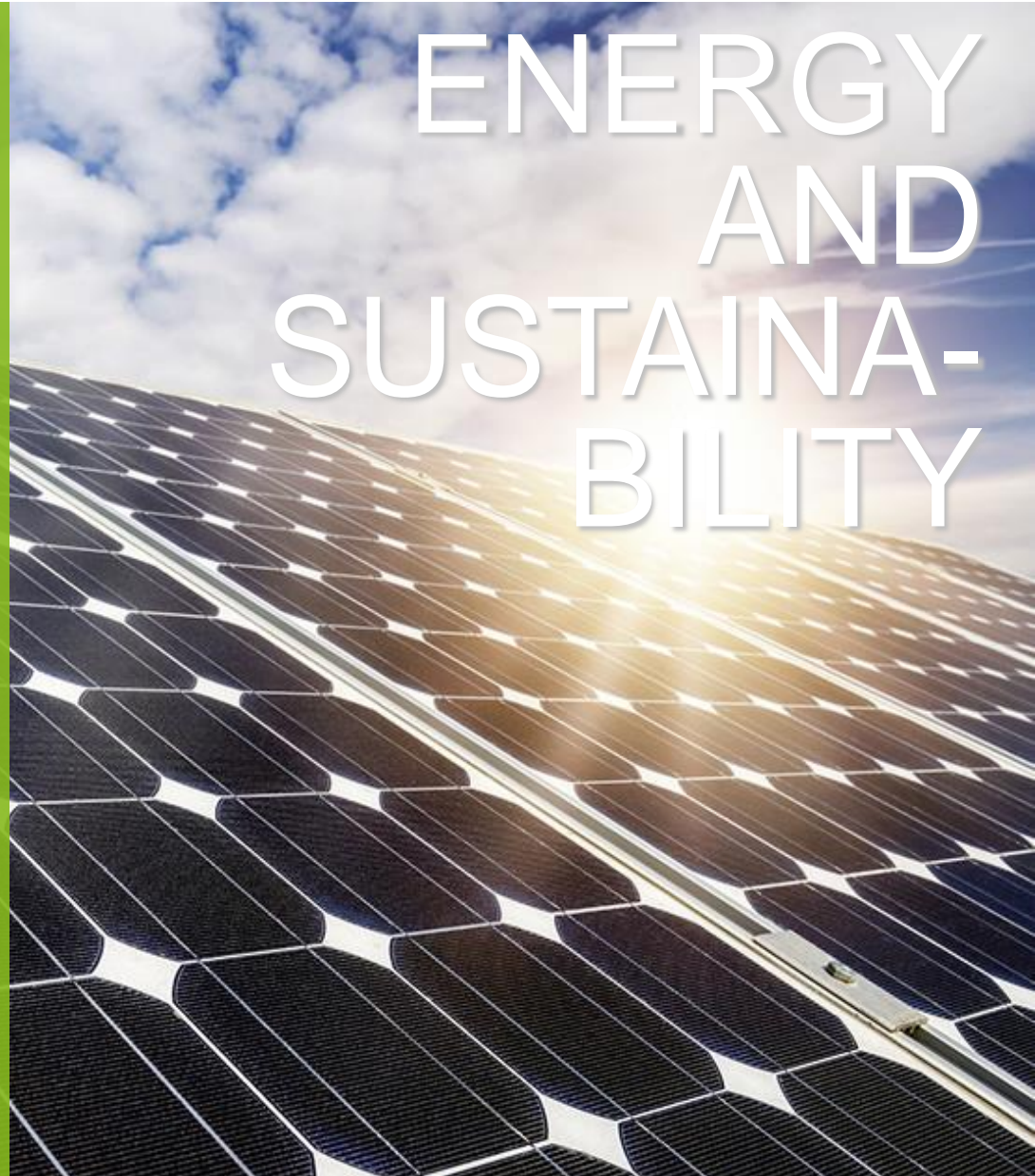
As a partner of the federal state of Salzburg, we are committed to the goals of the **climate and energy strategy SALZBURG 2050**. Cutting-edge medicine is associated with very high energy requirements and since University Hospital Salzburg is the largest company in the federal state of Salzburg, it is also one of the largest energy consumers.

Despite some very old buildings, the consumption of electricity and heat has been reduced by 15 percent per square metre since 2012, regardless of the increase floor area, through various measures.

- Energy optimisation in existing buildings and construction projects
- Waste heat utilisation and heat recovery
- Optimisation in drive- and lighting technology
- Own power generation by the photovoltaic system on the flat roof of building A, small hydropower plant "Heilmayermühle"
- Mobility management
 - Energy Globe Award Salzburg 2020 for E-mobility (E-car sharing)
 - E-bikes
 - Car-free hospital
- Raising awareness and public relations



ENERGY AND SUSTAINABILITY





PARACELSUS
MEDICAL
UNIVERSITY



UNIVERSITY HOSPITAL
UNIKLINIKUM
SALZBURG

MEDICAL BEACONS UNIVERSITY MEDICINE



Regenerative medicine

- Neuroscience
- Oncological, immunological and allergic diseases
- Musculoskeletal diseases, biomechanics and sports medicine
- Metabolic diseases

Stem cell therapy – pioneering role in Austria

- Innovative stem cell therapy for patients with multiple sclerosis in an international clinical trial
- Production in the PMU's own pharmaceutical manufacturing laboratory
- Extracellular Vesicles

*University Department of Blood Group
Serology and Transfusion Medicine at the
PMU (UBT)*

*University Hospital for Neurology of PMU
SCI – TReCS Centre for Spinal Cord Injury
and Tissue Regeneration Center Salzburg*



Innovative treatment strategies for cancer

- Routine blood stem cell laboratories, Laboratory for Immunological and Molecular Cancer Research
- Latest molecular pathological methods
- SIRT – Selective invasive Radiotherapy

*Paracelsus University Department for Internal Medicine III
– Oncology*

*Paracelsus University Department of Blood Group
Serology and Transfusion Medicine (UBT)*

Paracelsus University Institute of Pathology

University Hospital of Nuclear Medicine and Endocrinology





Expert centre for rare skin diseases – EB-Haus Austria

Focus on epidermolysis bullosa (EB). 2014 marked the first successful transplantation of gene-corrected pieces of skin on particularly damaged body parts (stem cell gene therapy). The latest development is the diacerein cream made from an active ingredient from rhubarb root, reducing blistering by 80% in the hereditary variant of EB. Global phase 3 study in planning.

University Hospital for Dermatology, EB-Haus Austria



The DaVinci® system – Robot-assisted surgery

For urological and visceral surgery. Highest precision thanks to HD-TV with 40x magnification and high mobility of the controls. New DaVinci Xi with table motion.

*University Hospital of Urology
University Hospital of Surgery
University Hospital of Otorhinolaryngology of PMU
University Hospital of Gynecology and Obstetrics of PMU*

Prevention, training therapy and competitive sports

- Check-ups for athletes and patients
- Sports fitness examinations and training programmes from everyday athletes to world championship participants and Olympians
- Outpatient training therapy and rehabilitation in internal pathology, Covid-Rehabilitation
- Rehabilitation Center Salzburg
- Training courses as part of occupational health promotion
- Research at the highest international level

Paracelsus University Institute for Preventive and Rehabilitative Sports Medicine
Paracelsus University Institute of Molecular Sports and Rehabilitation Medicine
Sports Medicine of the Olympic Centre Salzburg-RIF
Ludwig Boltzmann Institute for Digital Health and Prevention



More Medical Beacons

- **Study Paracelsus 10,000**
University Department of Internal Medicine I, Geriatrics and Neurology
- **Glaucoma micro-implant for ocular pressure regulation**
University Hospital of Ophthalmology
- **CT Revolution GE** - Computed tomography of the latest technical generation
University Institute of Radiology
- **Neurointervention Robotics**– System CorPath GRX of Corindus, *Department of Neuro-Radiology*
- **radART-Institut – Technologies for High-Precision Treatment of Cancer Patients** *University Clinic for Radiotherapy and Radio-Oncology*
- **Orphan Diseases** – Centre for Rare Diseases: Mitochondrial Diseases, Congenital Metabolic Diseases, (young.hope) etc.
Department of Pediatrics and Adolescent Medicine, Department of Dermatology and Neurology
- **Transregional trauma centre** with maximum care *university clinic for orthopaedics and traumatology*
Geriatric Trauma Center with *Department of Geriatrics*
- **Around 3,618 births** in 2022
Department of Gynaecology and Obstetrics, State hospitals Hallein and Tamsweg



PARACELSUS
MEDICAL
UNIVERSITY



SA | LK

SALZBURGER LANDESKLINIKEN

NURSING SERVICE



UNIVERSITY HOSPITAL
UNIKLINIKUM
SALZBURG



Salzburg General Hospital, Christian-Doppler-Medical Center

FTE care (2022): 2,117.98

Director of Nursing

Franziska Moser, BA MA

St. Veit State Hospital

FTE care: 98.54

Tamsweg State Hospital

FTE care: 111.31

Hallein State Hospital

FTE care: 120.54



Director of Nursing

Hallein & St. Veit

Mag. Karl Schwaiger



Director of Nursing

Tamsweg

Martina Moser



LANDESKLINIK
ST.VEIT

TEACHING HOSPITAL OF PMU



LANDESKLINIK
TAMSWEG

TEACHING HOSPITAL OF PMU,
MED UNI VIENNA & MED UNI GRAZ



LANDESKLINIK
HALLEIN

TEACHING HOSPITAL OF PMU,
MED UNI VIENNA

Nursing employees

At the University Hospital Salzburg and at the St. Veit, Hallein and Tamsweg state hospitals, professional nursing is essential to treat a large number of inpatients and outpatients every year.

- Nursing as a theory-guided practical discipline
- Evidence-based knowledge and standards
- Targeted advanced further education and training based on a career-oriented model
- Quality care through implementation of the current scientific knowledge in practice
- Grade and Skill Mix
- Professional framework GuKG (Austrian Care Allowance Act), MAB law, KAKuG (Federal Hospitals Act)
- Care oriented to the patient's needs



Professional strategy and projects in the field of nursing

- **Development of nursing experts (= APN)**

Requirement is consecutive master's degree + professional training

- COPD
 - Heart failure
 - Dementia
 - Diabetes
 - Oncological care
 - Geriatric nursing
-
- **Project dementia/delirium**
 - **Further development of wound-stoma continence management**
 - **LEP integration**

Further education and training

- Education programme <https://www.salk.at/bildung/>
- Trainee programmes
 - Trainee programme 1 for young professionals
 - Trainee programme 2 for Bachelor's graduates
 - Trainee programme 3 for Master's graduates

Trainee programme 1
for health and nursing
professions
(PA, PFA, DGKP)
Starts on career entry

Trainee programme 2
Graduates with Bachelors in
health and nursing
Nominee participants

Trainee programme 3
Masters Graduates in health
and nursing
Nominee participants

- Nursing careers model



PARACELSUS
MEDICAL
UNIVERSITY



SA | LK

SALZBURGER LANDESKLINIKEN

OUR STRENGTHS

Our strengths

- **Highly attractive due to university status**, close cooperation with the Paracelsus Medical University (PMU), the Paris Lodron University of Salzburg (PLUS), FH Salzburg etc.
- **National and international visibility** of numerous university clinics, clinical, translational and fundamental research (ophthalmology, neurology, oncology, etc.). Member of the **European Reference Networks: National centres of expertise** for rare skin diseases (EB), rare epilepsies and for malformations of the face and skull (cleft lip and palate and cranofacial, also provided for South Tyrol)
- **Competence-based central development** of several university clinics and UIs
- **Profiled and promoted clinical and academic career models** for medical staff and interdisciplinary and interprofessional continued education and training
- **Very good connection between university hospital and state hospitals** through telemedical connections
- Trendsetter in the use of robotic surgery to increase the quality of treatment
- Digitization (AI, telemedicine, 3D printing, 3D imaging)

Current challenges

- Consequences of the **COVID-19 pandemic**
- **Increased need for care** due to demographic change and medical progress with a simultaneous skills shortage and a persistent situation of few extramural healthcare facilities
- **High and growing burden on emergency outpatient departments** with non-acute patients ("self-referrers")
- **Problems of domestic guest patients** – missing view of the performance principle
- **Strong increases in personnel and material costs** due to high inflation and delivery difficulties
- **Medication costs** for e.g. IVOM therapy, oncological and rare diseases without involvement of social security
- **Decision to relocate the AUVA Emergency Hospital Salzburg** to form a trauma centre in one location
- **Framework conditions and interpretation of the Working Hours Act** (observance of rest period)

SALZBURG GENERAL HOSPITAL

Project start Haus B Restructuring of Haus A

Together, the state of Salzburg, the SALK and the AUVA are creating a new dimension of patient care for Salzburg.

- Interdisciplinary and inter-hospital cooperation due to geographical proximity of all departments of the Paracelsus University Hospital Salzburg
- Pooling of expertise and resources in one place

Trauma centre in House B

Modern accident management needs modern structures: through merging the Department of Orthopedics and Traumatology with the Emergency Hospital (AUVA) to form a new trauma centre at the University Hospital of Salzburg.

- Around 25,275 m² and seven levels in the immediate vicinity of House A
- Investment volume around 417 million euros
- Planned completion 2033
- oral and maxillofacial surgery, ENT, internal medicine 1; anaesthesia/intensive care unit
- 340 inpatient beds, one outpatient clinic, one day hospital and central emergency room

House A restructuring ("Surgery West")

- Surgery, cardiovascular surgery, urology; anaesthesia/intensive care unit



Responsibility begins and does not end at the hospital entrance...

- **Admission and discharge management**
- **Pediatric Neuro Rehab Centre reKIZ**
- **Participation in rehab facilities**
 - Rehaklinik Sonnberg, St. Veit im Pongau, with pro mente rehab
 - Neurological Rehabilitation NeuroCare, Salzburg, with Humanocare
 - Rehab. Center Salzburg, with Humanocare
 - Oncological rehabilitation, St. Veit im Pongau, with Vamed
 - Children's rehab Leuwaldhof, St. Veit im Pongau, with Vamed
- **Participation in nursing clinic**
 - Gunther Ladurner Care Centre, Salzburg, for residents with severe neurological diseases, with Humanocare





Neurocare Rehabilitation Clinic
Salzburg Campus CDK, 29 beds



Rehab Centre Salzburg
Campus Salzburg General Hospital



Pediatric Neuro Rehab Centre reKiZ, Campus Salzburg General Hospital, 10 beds



Günther Ladurner Nursing centre, Salzburg Campus CDK, 88 beds



Oncological Rehab Center
St. Veit, 120 beds



Leuwaldhof Children and Youth Rehab
St. Veit, 82 beds



Psychiatric Rehab St. Veit, 49 beds

History

1692 Construction of the Salzburg General Hospital under baroque master builder Johann Bernhard Fischer von Erlach. Foundation by Prince Archbishop Johann Ernst Graf Thun

1695 Opening of the building wing for men

1703/04 Inauguration of the church and opening of the eastern building wing for women

1754 Establishment of the pharmacy

1898 Opening of the state mental hospital for mentally ill and neuropathic patients at the present site of the Christian-Doppler Medical Center

1899 Opening of the Archduchess Marie Valerie of Austria Children's Hospital

Turn of the 20th century

Asepsis and narcosis, new departments such as ophthalmic and gynaecological clinic

1907 A public hospital is formed in Hallein

1908 Opening of the Kaiser Franz Josef Jubilee Hospital in Tamsweg

1912/13 Foundation of the state hospital in St. Veit/Pongau as Pulmonary Health Resort Grafenhof

1973 Opening of the general public hospital in the city of Hallein at its the present location

2003 Paracelsus Medical University begins teaching, SALK partner and training centre for clinic and research

1/1/2004 Gemeinnützige Salzburger Landeskliniken Betriebsgesellschaft mbH (SALK) (Salzburg General Hospital, Christian-Doppler Medical Center, St. Veit, Institute of Sports Medicine)

1/1/2016 Tamsweg State Hospital as part of SALK, Teaching Hospital of PMU

1/1/2017 Hallein State Hospital as part of SALK, Teaching Hospital of PMU

Thank you for your attention!



Photo: © Tourismus Salzburg